



# FOR SALE

17928 S. Star of India Lane, Carson CA 90746

**6,000 SF Industrial Building \$1,260,000 (\$210/SF)**



## FEATURES

Available Square Footage	6,000
Land Square Footage	POL
Office Square Footage	1,800
Parking	12
Dimensions	Verify
Loading	1 Ground Level Door 1 Truck High Position
Minimum Ceiling Clearance	16'
Power	400A, 277/480V, 3P, 4W
Sprinkler System	None
Construction	Concrete tilt-up
Zoning	ML&D

## ACCESSIBILITY

<b>MILES TO</b>	
Los Angeles International Airport	7.5
Long Beach Airport	8.0
Los Angeles & Long Beach Ports (both)	7.5
Intermodal Container Transfer Facility	2.5
Alameda Corridor	2.0
<b>IMMEDIATE ACCESS TO</b>	
405, 110 and 91 Freeways	

## HIGHLIGHTS

- Well-Maintained Business Park
- Completely Fenced and Gated
- Excellent Security/Security Guard on Premises
- Heavy - Well Distributed Power
- Truck High Loading is Shared with adjacent building



**WESLEY BABI**  
 CalBRE LIC. #01822752  
 310.436.6481  
 wbabi@lareminc.com



**ED WHITTEMORE**  
 CalBRE LIC. #00935219  
 310.436.6482  
 ewhittemore@lareminc.com

The information above has been obtained from sources believed reliable. While we do not doubt its accuracy, we have not verified it and make no guarantee, warranty or representation about it. It is your responsibility to independently confirm its accuracy and completeness. Any projections, options, assumptions or estimates used are for example only and do not represent the current or future performance of the property. The value of this transaction to you depends on tax and other factors which should be evaluated by your tax, financial and legal advisors. You and your advisors should conduct a careful, independent investigation of the property to determine to your satisfaction the suitability of the property for your needs.

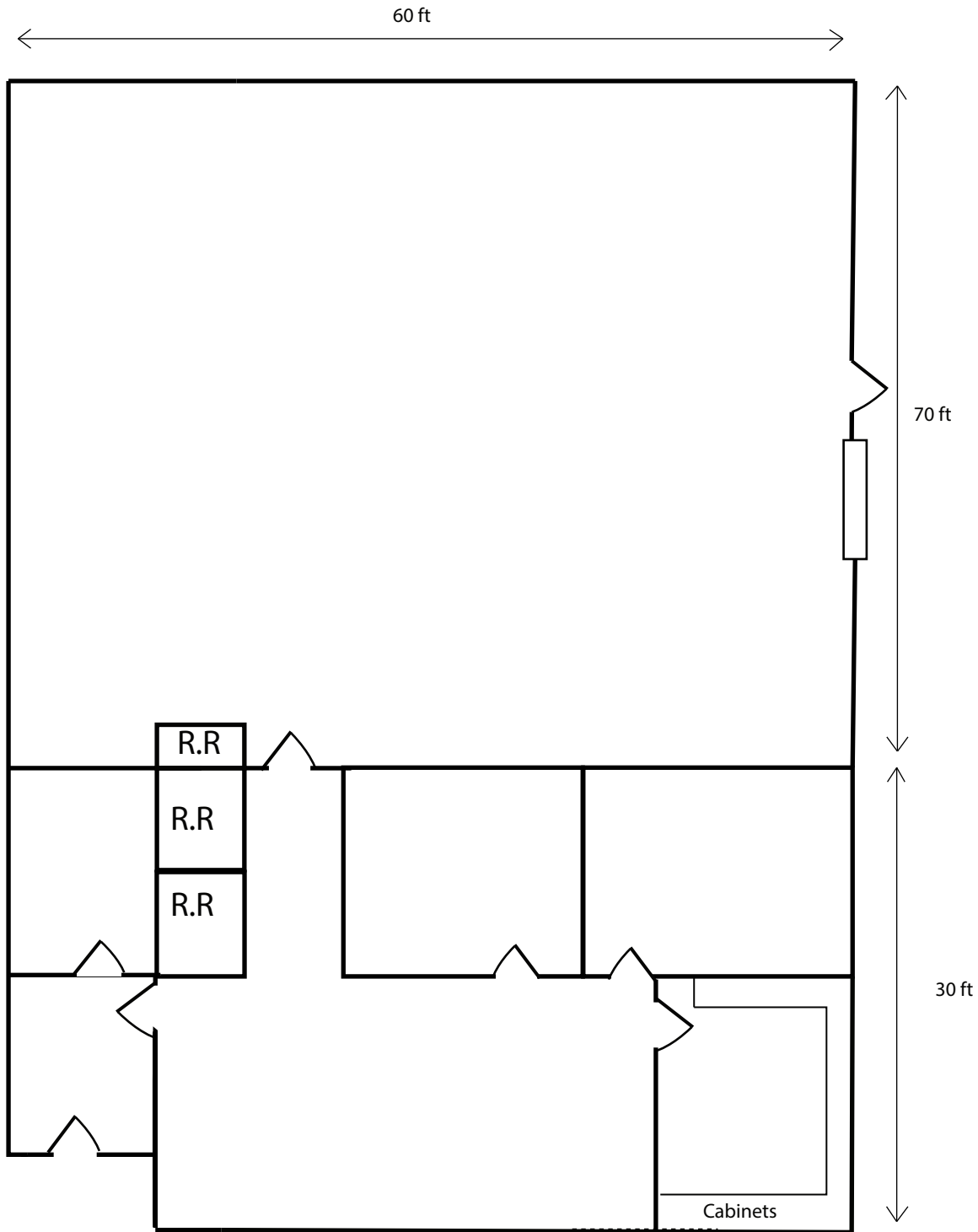
310.719.1585 // [lareminc.com](http://lareminc.com)  
 165 Savarona Way, Carson, California 90746

TRUSTED INDUSTRIAL REAL ESTATE SOLUTIONS SINCE 1993



## SITE PLAN

17928 S. Star of India Lane, Carson CA 90746



Not To Scale

The information above has been obtained from sources believed reliable. While we do not doubt its accuracy, we have not verified it and make no guarantee, warranty or representation about it. It is your responsibility to independently confirm its accuracy and completeness. Any projections, options, assumptions or estimates used are for example only and do not represent the current or future performance of the property. The value of this transaction to you depends on tax and other factors which should be evaluated by your tax, financial and legal advisors. You and your advisors should conduct a careful, independent investigation of the property to determine to your satisfaction the suitability of the property for your needs.

310.719.1585 // [lareminc.com](http://lareminc.com)  
165 Savarona Way, Carson, California 90746

TRUSTED INDUSTRIAL REAL ESTATE SOLUTIONS SINCE 1993