



FOR SUBLEASE

3037 E. Harcourt Street, Rancho Dominguez, CA 90221

23,940 SF Industrial Building

\$ 20,349 / month (\$0.85/SF) Gross



FEATURES

Available Square Footage	23,940
Land Square Footage	41,492
Office Square Footage	3,246
Parking	47
Dimensions	191' x 188'
Loading	1 Dock-high Loading Position 3 Ground Level Doors
Minimum Ceiling Clearance	15'
Power	1200 Amps, 120-240 Volts, 3P, 4W
Sprinkler System	None
Year Built	1969
Construction	Brick
Zoning	LCM 1.5

ACCESSIBILITY

MILES TO

Los Angeles International Airport	18.0
Long Beach Airport	8.0
Los Angeles & Long Beach Ports (both)	9.0

IMMEDIATE ACCESS TO

710, 405, 110 and 91 Freeways
Alameda Corridor

HIGHLIGHTS

- Ideally configured for manufacturing/distribution
- Bonus 3,062 SF mezzanine
- Sublease term up to 1 year.
- Thereafter month-to-month term possible



WESLEY BABI

LICENSE #01822752

310.436.6481

wbabi@lareminc.com

310.719.1585 // lareminc.com
165 Savarona Way, Carson, California 90746

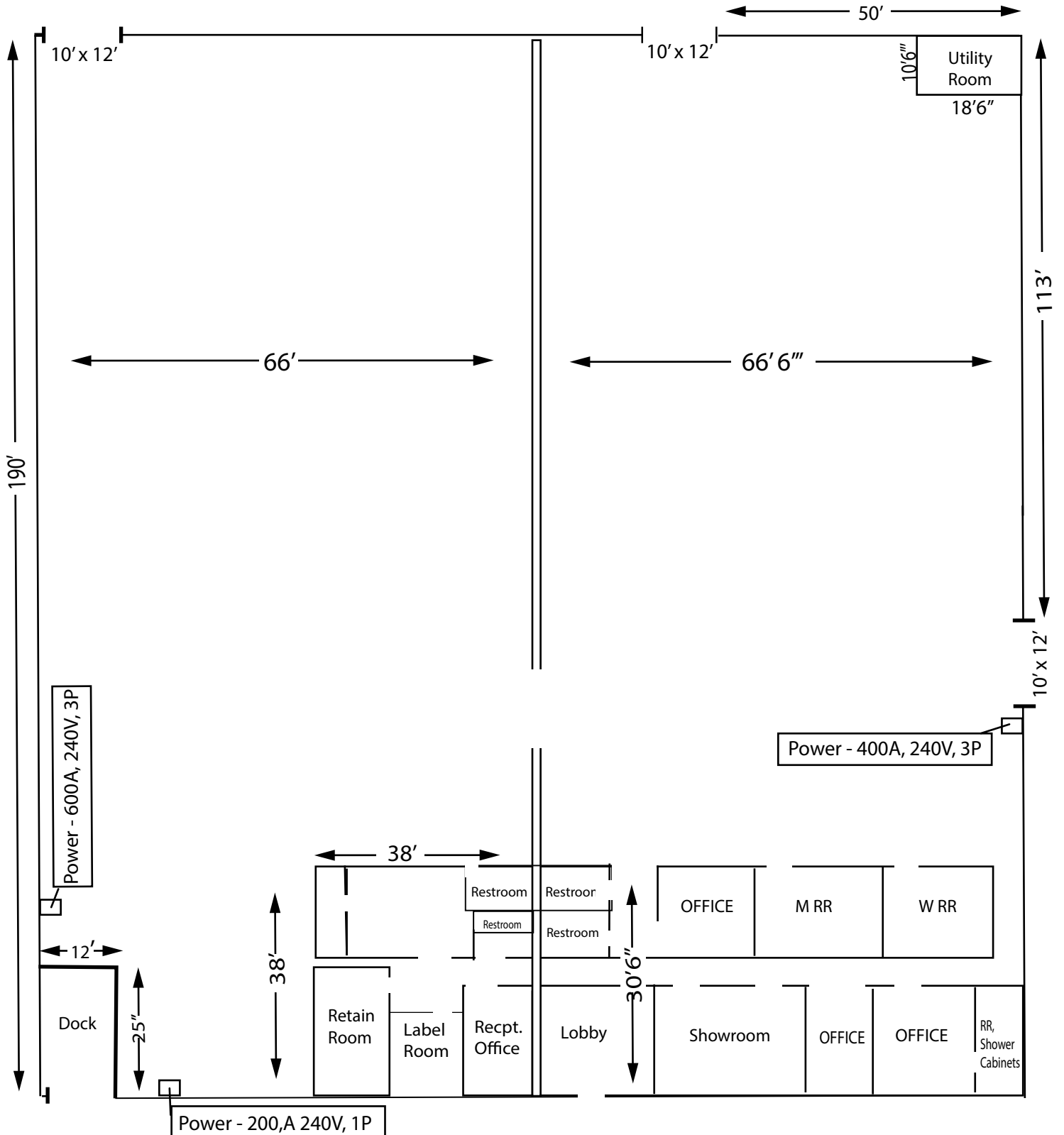
TRUSTED INDUSTRIAL REAL ESTATE SOLUTIONS SINCE 1993

The information above has been obtained from sources believed reliable. While we do not doubt its accuracy, we have not verified it and make no guarantee, warranty or representation about it. It is your responsibility to independently confirm its accuracy and completeness. Any projections, options, assumptions or estimates used are for example only and do not represent the current or future performance of the property. The value of this transaction to you depends on tax and other factors which should be evaluated by your tax, financial and legal advisors. You and your advisors should conduct a careful, independent investigation of the property to determine to your satisfaction the suitability of the property for your needs.



SITE PLAN

3037 E. Harcourt Street, Rancho Dominguez



The information above has been obtained from sources believed reliable. While we do not doubt its accuracy, we have not verified it and make no guarantee, warranty or representation about it. It is your responsibility to independently confirm its accuracy and completeness. Any projections, opinions, assumptions or estimates used are for example only and do not represent the current or future performance of the property. The value of this transaction to you depends on tax and other factors which should be evaluated by your tax, financial and legal advisors. You and your advisors should conduct a careful, independent investigation of the property to determine to your satisfaction the suitability of the property for your needs.