



FOR LEASE

15144 Downey Avenue, Paramount, CA 90723
Downey Business Park

4,800 SF Industrial Unit

\$6,720.00 / month (\$1.40/SF) Gross



FEATURES

Available Square Footage	4,800
Land Square Footage	Part of Larger
Office Square Footage	800
Parking	1.5/1,000
Loading	3 (10'x11') Ground Level Doors
Dimensions	Verify
Year Built	1973
Construction	Concrete Tilt-up
Zoning	PACM
Minimum Ceiling	Clearance 18'
Power	200 Amps, 120-240v, 3p, 4w
Sprinkler System	None

HIGHLIGHTS

Well-Maintained Industrial Park

ACCESSIBILITY

MILES TO

Los Angeles International Airport	15.0
Long Beach Airport	5.5
Los Angeles & Long Beach Ports (both)	11.0

IMMEDIATE ACCESS TO

105, 605, 710 and 91 Freeways



ALEX GUANCHE

LICENSE #02010509

310.436.6489

aguanche@lareminc.com

310.719.1585 // lareminc.com
165 Savarona Way, Carson, California 90746

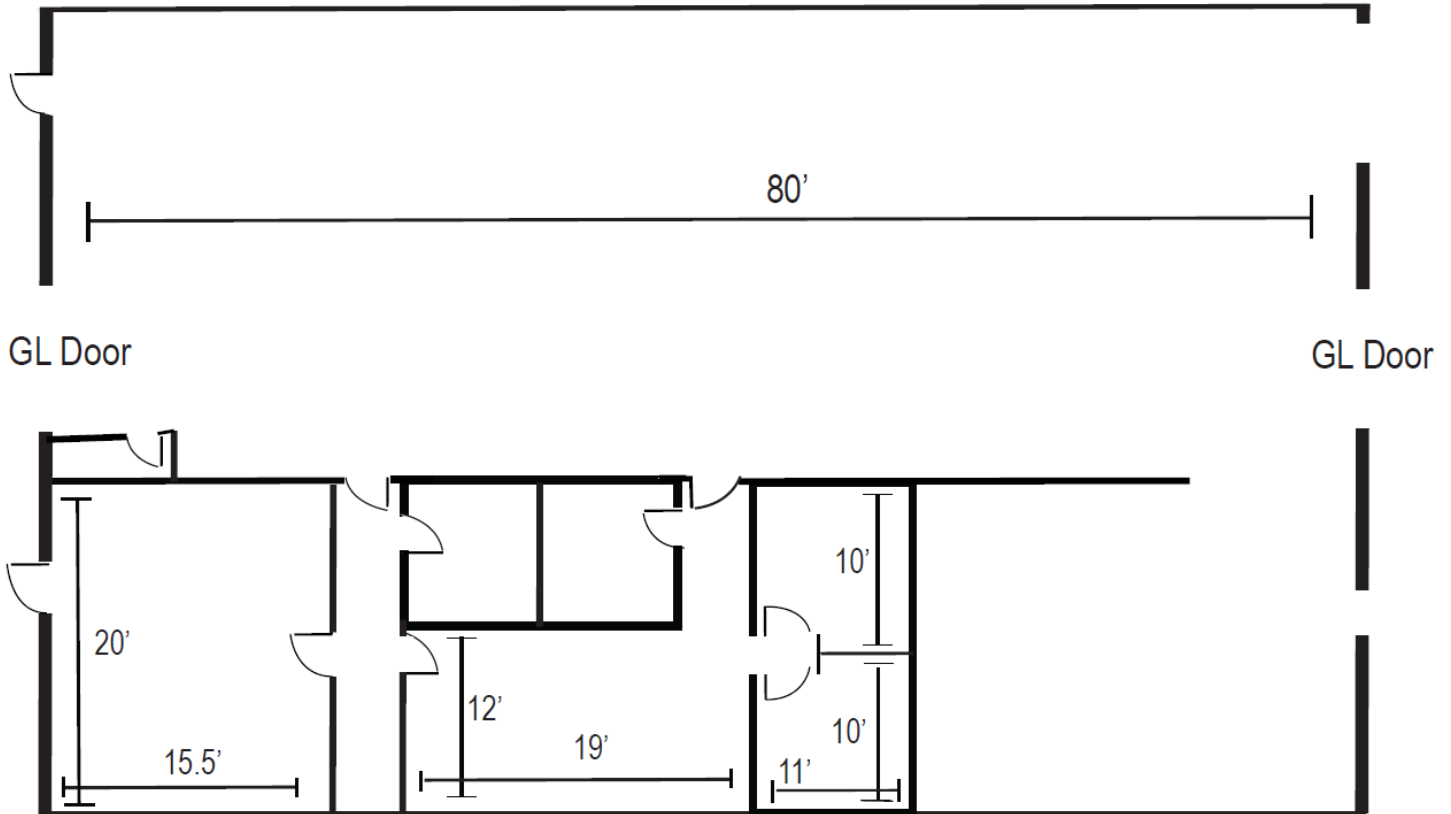
TRUSTED INDUSTRIAL REAL ESTATE SOLUTIONS SINCE 1993

The information above has been obtained from sources believed reliable. While we do not doubt its accuracy, we have not verified it and make no guarantee, warranty or representation about it. It is your responsibility to independently confirm its accuracy and completeness. Any projections, options, assumptions or estimates used are for example only and do not represent the current or future performance of the property. The value of this transaction to you depends on tax and other factors which should be evaluated by your tax, financial and legal advisors. You and your advisors should conduct a careful, independent investigation of the property to determine to your satisfaction the suitability of the property for your needs.



SITE PLAN

15144 Downey Avenue, Paramount



The information above has been obtained from sources believed reliable. While we do not doubt its accuracy, we have not verified it and make no guarantee, warranty or representation about it. It is your responsibility to independently confirm its accuracy and completeness. Any projections, options, assumptions or estimates used are for example only and do not represent the current or future performance of the property. The value of this transaction to you depends on tax and other factors which should be evaluated by your tax, financial and legal advisors. You and your advisors should conduct a careful, independent investigation of the property to determine to your satisfaction the suitability of the property for your needs.

310.719.1585 // lareminc.com
165 Savarona Way, Carson, California 90746
TRUSTED INDUSTRIAL REAL ESTATE SOLUTIONS SINCE 1993