



FOR LEASE

21010 S Figueroa Street, Carson, CA 90745

39,391 SF Industrial/Flex Building

TBD



FEATURES

Available Square Footage	39,391
Land Square Footage	Part of Larger
Total Office	11,883
Parking	210
Loading	1 DH Position via Interior Well 2 GL Doors: 1 (12' x 14'); 1 (8'x10')
Minimum Ceiling Clearance	24'
Power	600A, 277-480 V, 3P, 4W
Sprinklers	.60/2500
Year Built	2002
Construction	CTU
Zoning	SP-3

HIGHLIGHTS

Light Industrial and Retail Uses Possible
 Creative Office Build-Out - 210 Car Parking
 Showroom - Two Luxury Executive Suites
 Opex: \$.46/SF

[Link to SP 3 Zoning Specific Plan](#)

[Link to view photos](#)

ACCESSIBILITY

MILES TO

Los Angeles International Airport	9.0
Long Beach Airport	7.5
Los Angeles & Long Beach Ports (both)	5.5
Intermodal Container Transfer Facility	4.5

IMMEDIATE ACCESS TO

110 and 405 Freeways
 Harbor (110) Freeway Frontage



COLIN LANCASTER

Cal DRE Lic# 02197733

310.436.6488

clancaster@lareminc.com



DIMITRI PETRAKIS

Cal DRE Lic# 02208946

310.620.8770

dpetrakis@lareminc.com



MATT GINOCCHIO

Cal DRE Lic# 01777208

310.436.6488

mginocchio@lareminc.com

310.719.1585 // www.lareminc.com
 165 Savarona Way, Carson, California 90746

TRUSTED INDUSTRIAL REAL ESTATE SOLUTIONS SINCE 1993

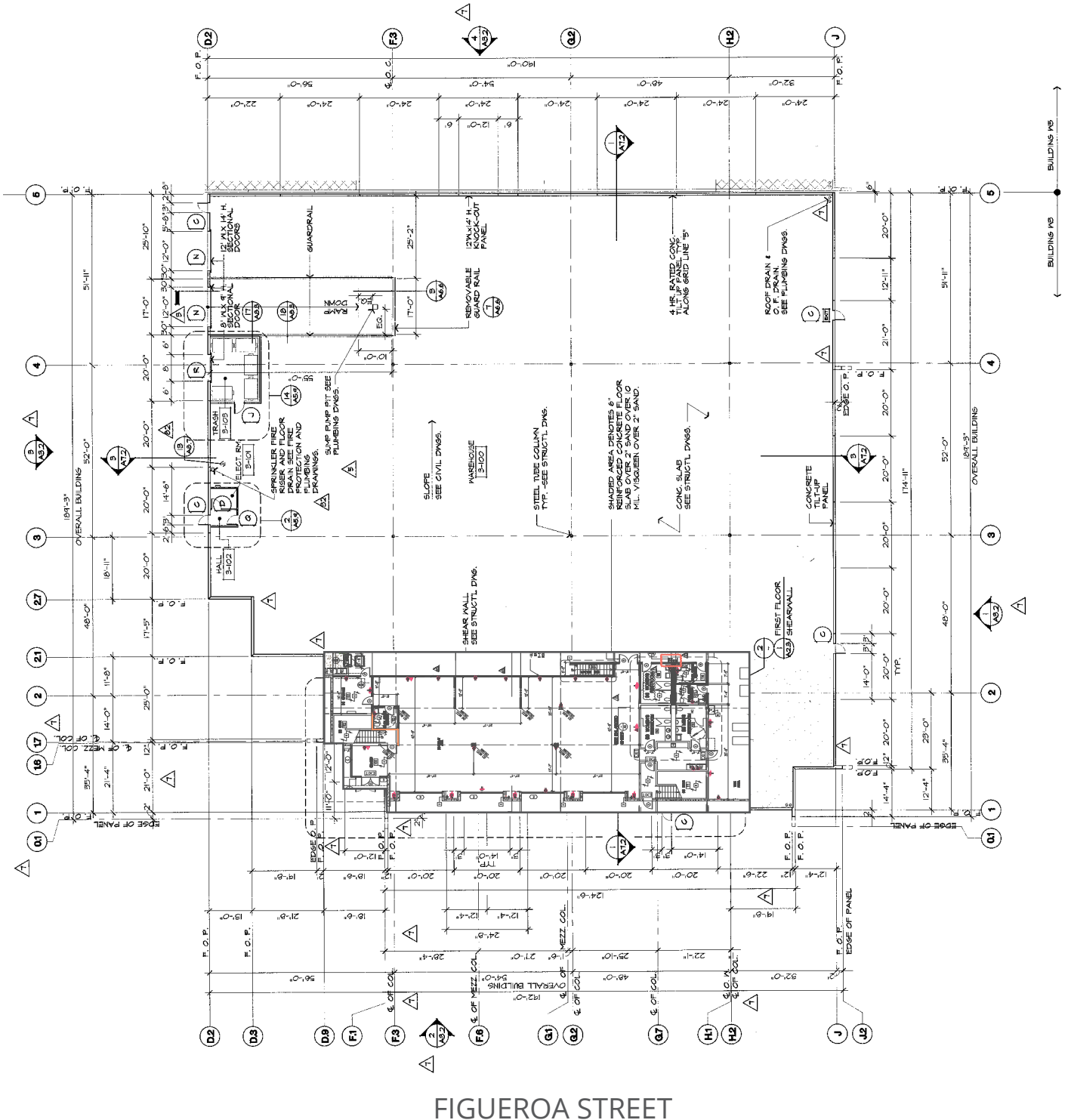
The information above has been obtained from sources believed reliable. While we do not doubt its accuracy, we have not verified it and make no guarantee, warranty or representation about it. It is your responsibility to independently confirm its accuracy and completeness. Any projections, options, assumptions or estimates used are for example only and do not represent the current or future performance of the property. The value of this transaction to you depends on tax and other factors which should be evaluated by your tax, financial and legal advisors. You and your advisors should conduct a careful, independent investigation of the property to determine to your satisfaction the suitability of the property for your needs.



FOR LEASE

21010 S Figueroa Street, Carson, CA 90745

SITE PLAN



The information above has been obtained from sources believed reliable. While we do not doubt its accuracy, we have not verified it and make no guarantee, warranty or representation about it. It is your responsibility to independently confirm its accuracy and completeness. Any projections, options, assumptions or estimates used are for example only and do not represent the current or future performance of the property. The value of this transaction to you depends on tax and other factors which should be evaluated by your tax, financial and legal advisors. You and your advisors should conduct a careful, independent investigation of the property to determine to your satisfaction the suitability of the property for your needs.

310.719.1585 // www.lareminc.com
 165 Savarona Way, Carson, California 90746

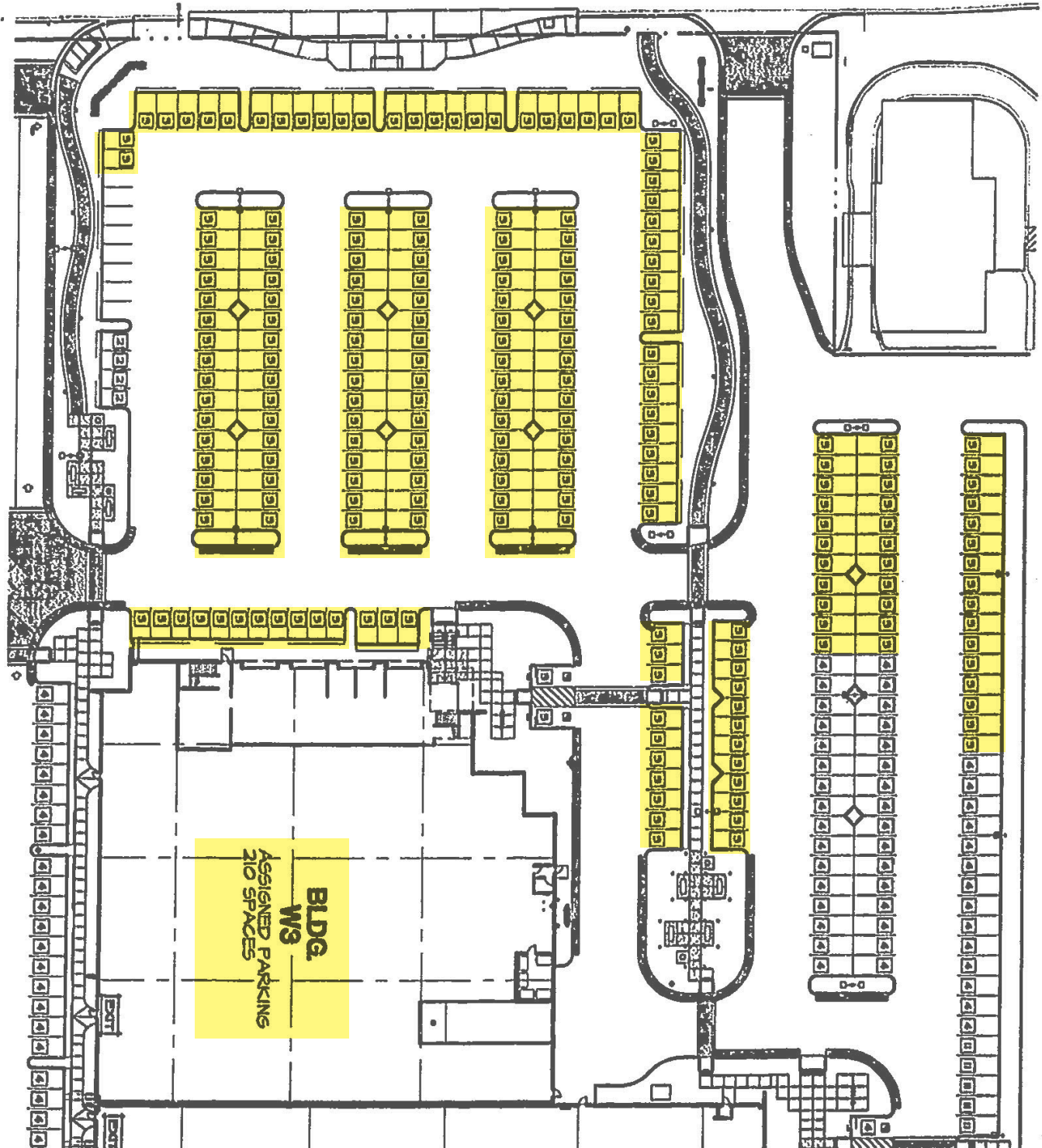
TRUSTED INDUSTRIAL REAL ESTATE SOLUTIONS SINCE 1993



FOR LEASE

21010 S Figueroa Street, Carson, CA 90745

PARKING SPACES



The information above has been obtained from sources believed reliable. While we do not doubt its accuracy, we have not verified it and make no guarantee, warranty or representation about it. It is your responsibility to independently confirm its accuracy and completeness. Any projections, options, assumptions or estimates used are for example only and do not represent the current or future performance of the property. The value of this transaction to you depends on tax and other factors which should be evaluated by your tax, financial and legal advisors. You and your advisors should conduct a careful, independent investigation of the property to determine to your satisfaction the suitability of the property for your needs.

310.719.1585 // www.lareminc.com
165 Savarona Way, Carson, California 90746

TRUSTED INDUSTRIAL REAL ESTATE SOLUTIONS SINCE 1993